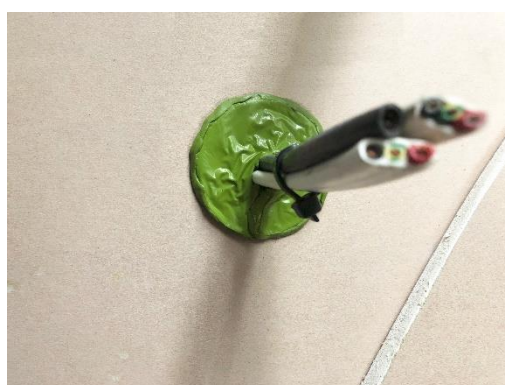


Penopatch™

*Flexible & versatile fire rated patch for fast treatment of small cables & pipe penetrations.
Approved to AS1530.4-2014 & AS4072.1-2005.*



Technical Data Sheet

Edition 4
December 2023



The 30 second fire seal...Apply in just 30 seconds....

KEY BENEFITS

- Low cost
- Fast 30 second installation
- Fire rated up to 60 minutes
- Simple to identify, audit & certify
- No curing time
- Versatile - use on a variety of services

INTRODUCTION



BOSS Penopatch™ is a low cost, simple method of sealing blank openings, individual cables, small bundles of cables, pipes and conduits in a range of 1hr fire walls. Made with a fire resistant advanced formula

putty with a strong bonding capability, the **BOSS Penopatch™** simply presses onto the wall around the service and instantly provides up to a 60 minute fire rating.

BOSS Penopatch™ is supplied in the form of a 60mm diameter discs in packs of 20 units. (100mm Diameter **BOSS Penopatch™** is also available upon request. Contact the BOSS office for minimum order quantities).

The **BOSS Penopatch™** has been tested and approved to various international standards including AS1530.4-2014, AS4072.1-2005 and BS EN1366-3: 2009. It has been tested on some of the most onerous conditions including single layer plasterboard systems. Under fire conditions the product maintains its bond to the substrate. The integrity and insulation is then maintained by the stability of the remaining product char.



Ideal for Electricians, Plumbers & Gasfitters, HVAC&R installers, maintenance personnel and passive fire applicators.

PRODUCT APPLICATIONS & ADVANTAGES

- Up to 16mm Dia. Pipes including:
 - Combustible pipes
 - Combustible Conduits
 - PEX Pipe
 - Steel & Copper Pipes
- Data Cables
- Power Cables such as TPS
- Small Cable Bundles
- Blank Openings
- Suitable for use in new and existing builds
- The most simple installation method available
- No mess - no clean up
- Ease of certification
- Approved on a wide range of substrates including plasterboard, masonry and concrete walls.

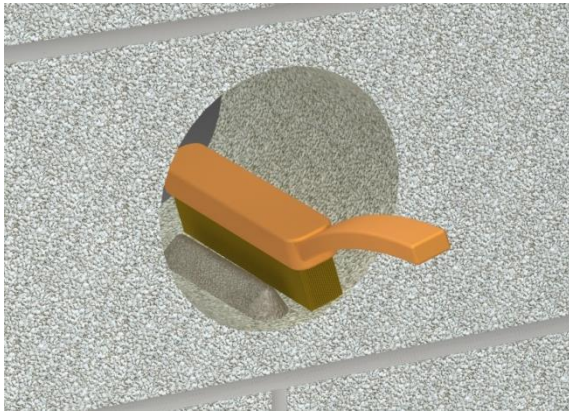
PHYSICAL PROPERTIES

TABLE 1.

Description	Advanced Formula FR Putty
Size	60mm Dia. x 4mm Thick 100mm Dia. x 4mm Thick
Density	1.55-1.6g/cm ³
Colour	Green
Application temperature	+5°C
Box Quantity	20
Expected Shelf Life	12 Months (Store unopened in dry conditions).
Testing	AS1530.4-2014, BS EN1366-2009

INSTALLATION

- Ensure the aperture and services in question are tested or assessed with **BOSS Penopatch™**, and site conditions are within the application specification.
- Ensure your aperture size meets with the appropriate tested solution.
- All services and apertures need to be thoroughly cleaned and free of dust and debris or loose particles.



- The aperture needs to be at 5°C or above at time of installation.
- Simply peel off the backing paper, exposing the tacky rear face of the **BOSS Penopatch™**.
- Ensure the **BOSS Penopatch™** will be applied with the slot facing down towards the floor.
- Apply the **BOSS Penopatch™** around the service and press firmly with fingers moulding the **BOSS Penopatch™** to fully encircle the service and adhere to the wall surface. Maintain pressure for a period of 30 seconds to ensure correct bond.

COMMON APPLICATIONS:

CAT6 Data Cables:



TPS Power Cables:



PEX Pipe up to 16mm Ø:



PERFORMANCE SPECIFICATIONS

BOSS PenoPatch has approvals to AS1530.4: 2014 and AS4072.1-2005 for a wide variety of applications.

IMPORTANT:

In order to ensure performance and compliance, passive firestopping products must be installed in accordance with the test evidence, manufacturer's specifications or be the subject of a performance solution.

Each project and/or application may have specific requirements and you should investigate these carefully.

Ensure that you read and understand the appropriate certification and how it relates to your specific construction details, and ensure you seek acceptance from the Certifying Authority or compliance inspector before installation.

Ensure your installation is carried out in accordance with the test certification, manufacturer's instructions, and in accordance with the relevant local building regulations, National Construction Code or Building Code.

For updates on the range of BOSS Fire® certification please contact BOSS Technical Services. +612 9531 8591 OR info@bossfire.com.au

BOSS FIRE SYSTEM MATRIX

For specific summary information on the approved systems relevant to PenoPatch™ please refer to the BOSS Fire System Matrix. The BOSS Fire System Matrix is a filterable summary document containing information to help select the appropriate system relevant to your building application. Associated Test and Assessment Reports are also available for download from the Resources page at bossfire.com.au/resources.

TABLE 2.

Service	Local Fire Stopping Protection System	Wall Type	Seal Size	Drawing Ref.	FRL
---------	---------------------------------------	-----------	-----------	--------------	-----

60mm Penopatch:

Blank Seal	BOSS Penopatch™ 60mm Dia.	Min 118mm thick: <ul style="list-style-type: none"> Plasterboard wall with at least one layer of 13mm plasterboard on both sides. 	20mm Ø Aperture	Fig 1 & Fig 6	-/60/60	
16mm Ø PEX Pipe			Wall type with localised build up to ensure min 118mm thick <ul style="list-style-type: none"> Concrete Masonry, AAC / Hebel Metal Clad AAC Speedpanel Korok 	20mm Ø Aperture	Fig 2 & Fig 7	-/60/60
Bundle of CAT6 Data cables (5 of)				20mm Ø Aperture	Fig 3 & Fig 8	-/60/30
Bundle of CAT6 Data cables (3 of)				20mm Ø Aperture	Fig 4 & Fig 9	-/60/60
Bundle of TPS Power Cables (3 of)				25mm Ø Aperture	Fig 3 & Fig 8	-/60/60
Blank Seal		Min 100mm thick: <ul style="list-style-type: none"> Plasterboard wall with at least one layer of 13mm plasterboard on both sides. 		25mm x 25mm Aperture	Fig 1 & Fig 6	-/120/60
Single PVC / PVC Sheathed 5mm x 1.5mm ² Cable			25mm x 25mm Aperture	Fig 3 & Fig 8	-/60/30	
				Fig 5 & Fig 10	-/60/60	
Single EPR / PO Sheathed 5mm x 1.5mm ² Cable			25mm x 25mm Aperture	Fig 3 & Fig 8	-/60/30	
				Fig 5 & Fig 10	-/60/60	
Single XLPE /EVA Sheathed 5mm x 1.5mm ² Cable			25mm x 25mm Aperture	Fig 3 & Fig 8	-/120/60	
Single PVC / PVC Sheathed 1mm x 95mm ² Cable			25mm x 25mm Aperture	Fig 3 & Fig 8	-/120/30	
				Fig 5 & Fig 10	-/120/60	
Steel or Copper Pipe up to 16mm Dia.			25mm x 25mm Aperture	Fig 2	-/120/-	
PVC Conduit up to 16mm Dia.	25mm x 25mm Aperture	Fig 2 & Fig 7	-/60/60			
Single PVC / PVC Sheathed 1mm x 185mm ² Cable	25mm x 25mm Aperture	Fig 3 & Fig 8	-/120/30			
		Fig 5 & Fig 10	-/120/60			

TABLE 3.

Service	Local Fire Stopping Protection System	Wall Type	Seal Size	Drawing Ref.	FRL
100mm Penopatch:					
Bundle of 3 PVC / PVC Sheathed 5mm x 1.5mm ² Cables	BOSS Penopatch™ - 100mm Dia.	Min 100mm thick: • Plasterboard wall with at least one layer of 13mm plasterboard on both sides. Wall type with localised build up to ensure min 100mm thick • Concrete • Masonry, • AAC / Hebel • Metal Clad AAC • Speedpanel • Korok	50mm x 50mm Aperture	Fig 3 & Fig 8	-/60/60
Bundle of 3 EPR / PO Sheathed 5mm x 1.5mm ² Cables			50mm x 50mm Aperture	Fig 3 & Fig 8	-/60/30
Bundle of 3 XLPE /EVA Sheathed 5mm x 1.5mm ² Cables			50mm x 50mm Aperture	Fig 5 & Fig 10	-/60/60
Single PVC / PVC Sheathed 1mm x 95mm ² Cable			50mm x 50mm Aperture	Fig 3 & Fig 8	-/60/60
Blank Seal			50mm x 50mm Aperture	Fig 3 & Fig 8	-/60/30
Steel or Copper Pipe up to 16mm Dia.			50mm x 50mm Aperture	Fig 1 & Fig 6	-/60/60
PVC Conduit up to 16mm Dia.			50mm x 50mm Aperture	Fig 2	-/60/-
Single PVC / PVC Sheathed 1mm x 185mm ² Cable			50mm x 50mm Aperture	Fig 2 & Fig 7	-/60/30
		50mm x 50mm Aperture	Fig 3 & Fig 8	-/30/30	

DRAWINGS – REFER TABLES 2 & 3

Figure 1 – Blank Seal

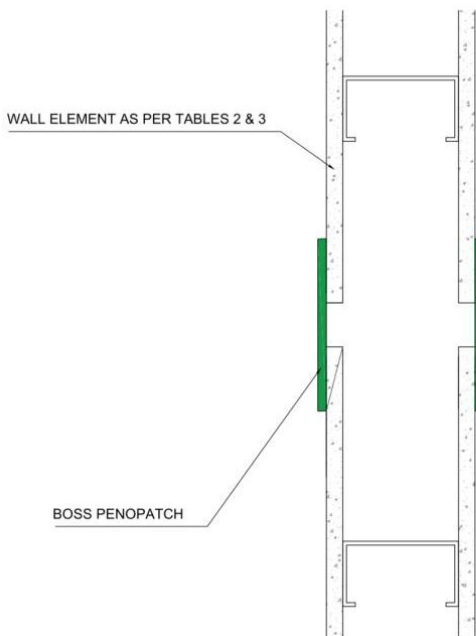


Figure 2 – PEX Pipe, PVC Conduit, Steel or Copper Penetrations

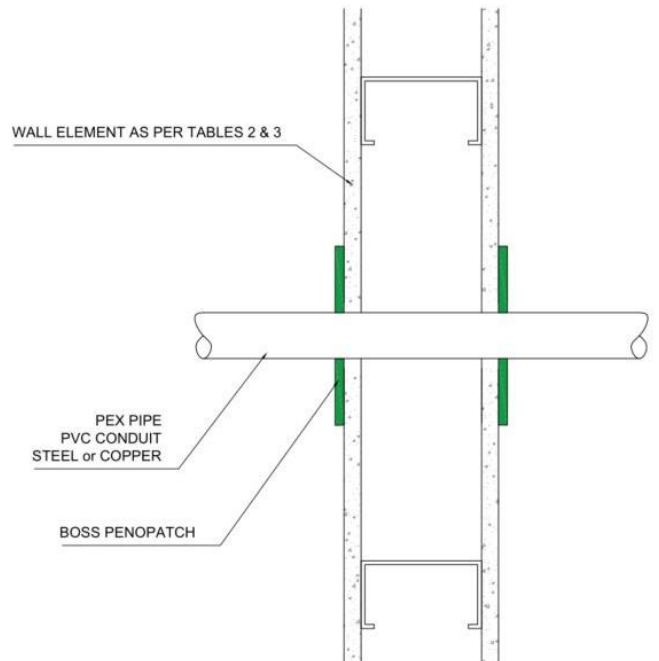


Figure 3 – Cable Penetrations

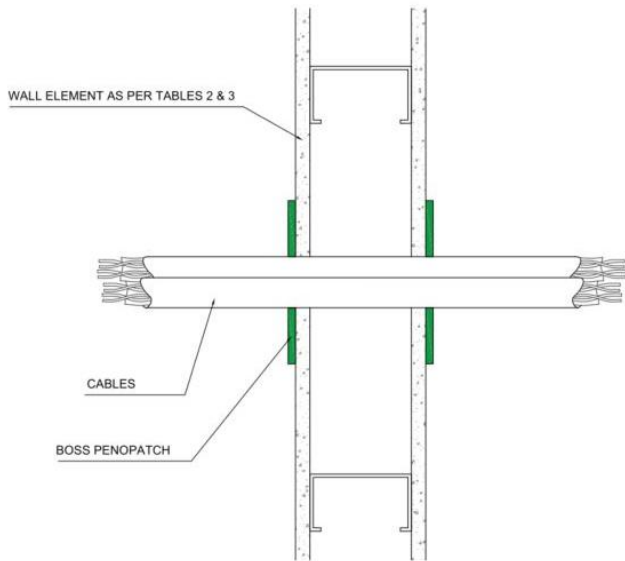


Figure 5 – Cable Penetrations with additional protection

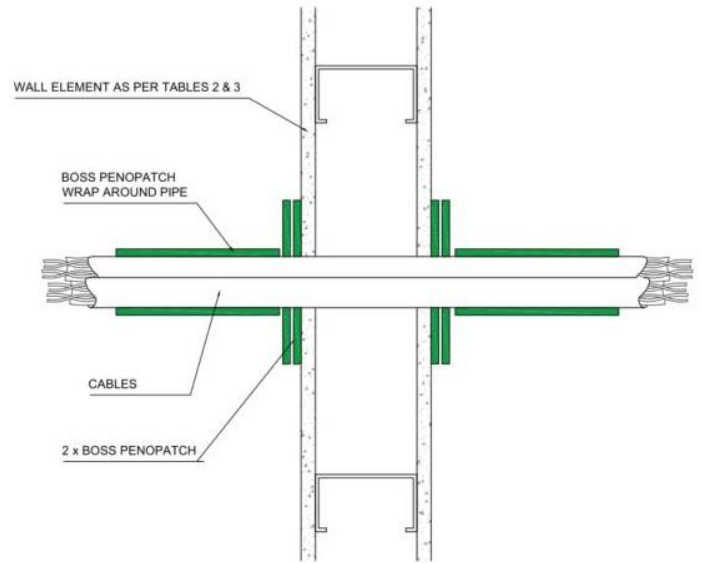


Figure 6 – Blank Seal on the same side of the wall

Figure 4 - CAT 6 Cable Penetrations (Up to 3 cables)

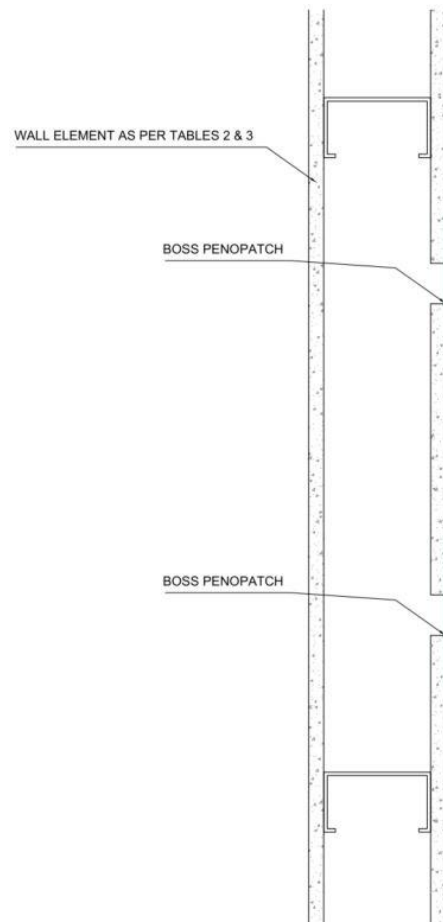
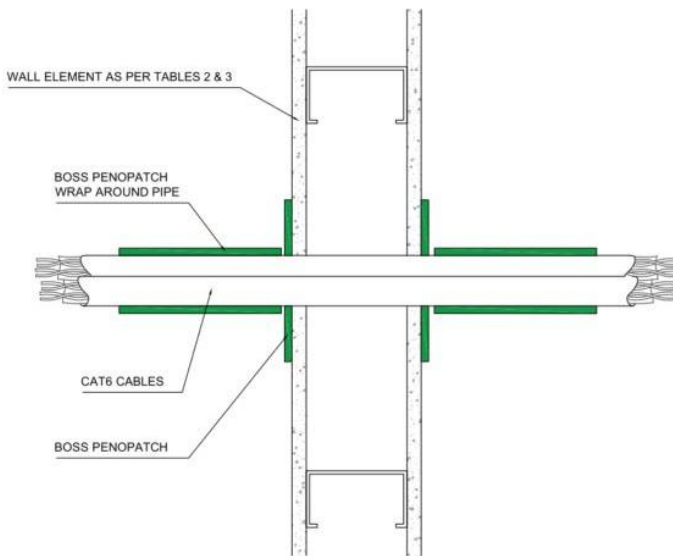


Figure 7 - PEX Pipe or PVC Conduit penetrating the wall without exiting to the other side

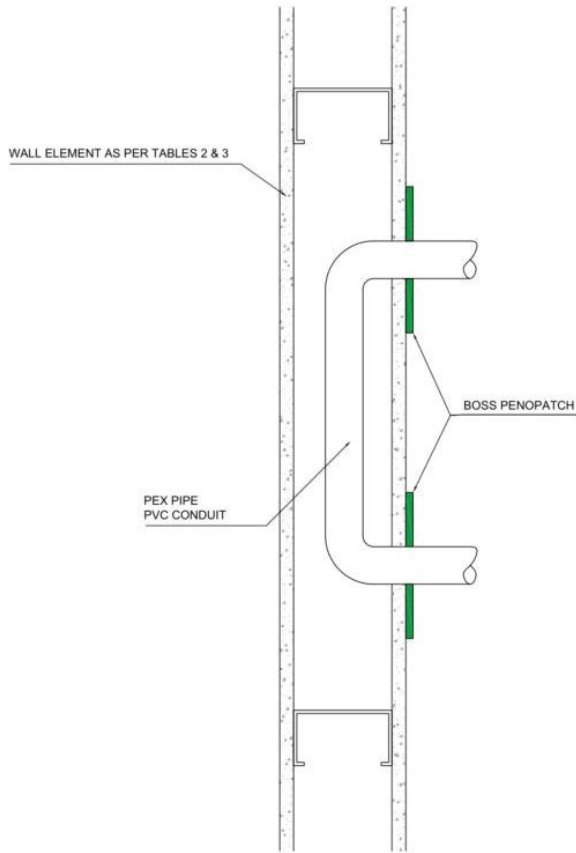


Figure 9 – CAT6 Cable Penetrations (up to 3 cables) penetrating the wall without exiting to the other side

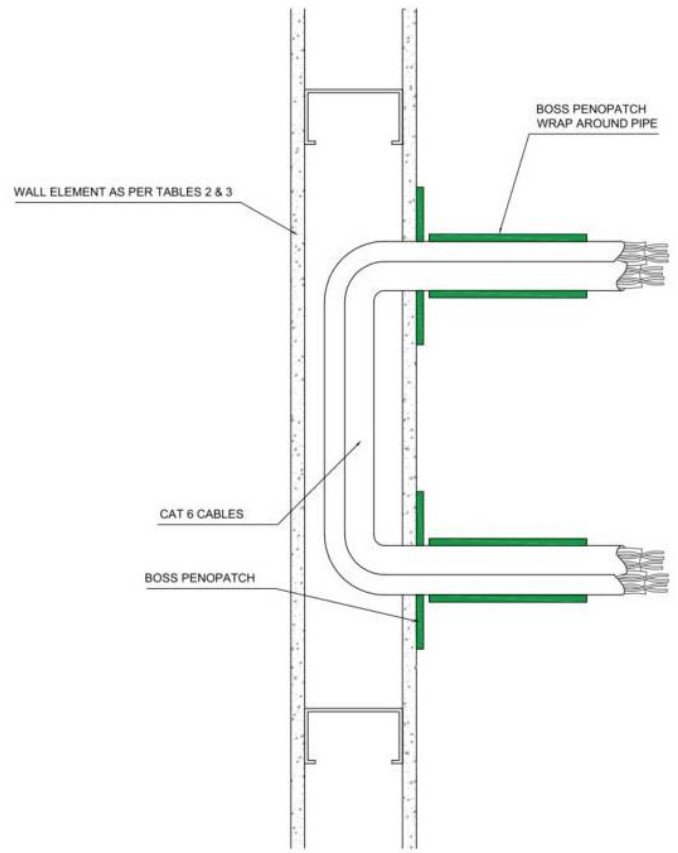


Figure 8 – Cable Penetrations penetrating the wall without exiting to the other side

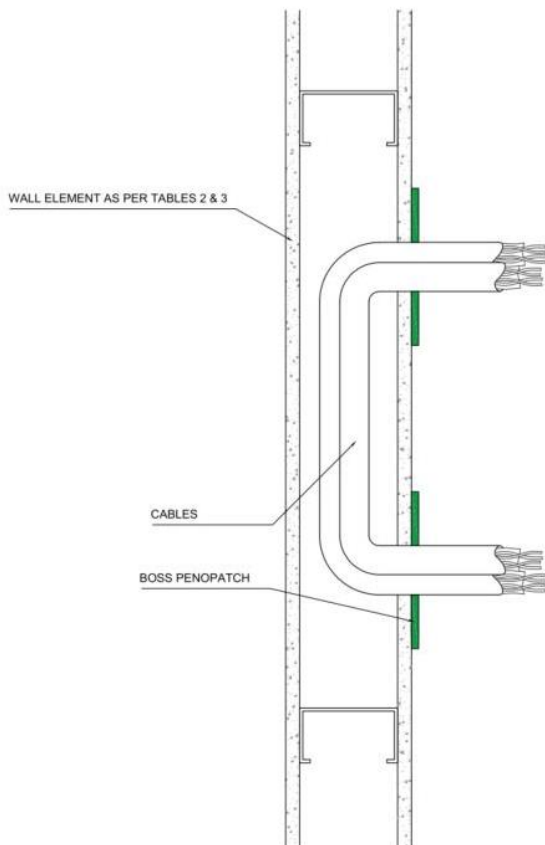
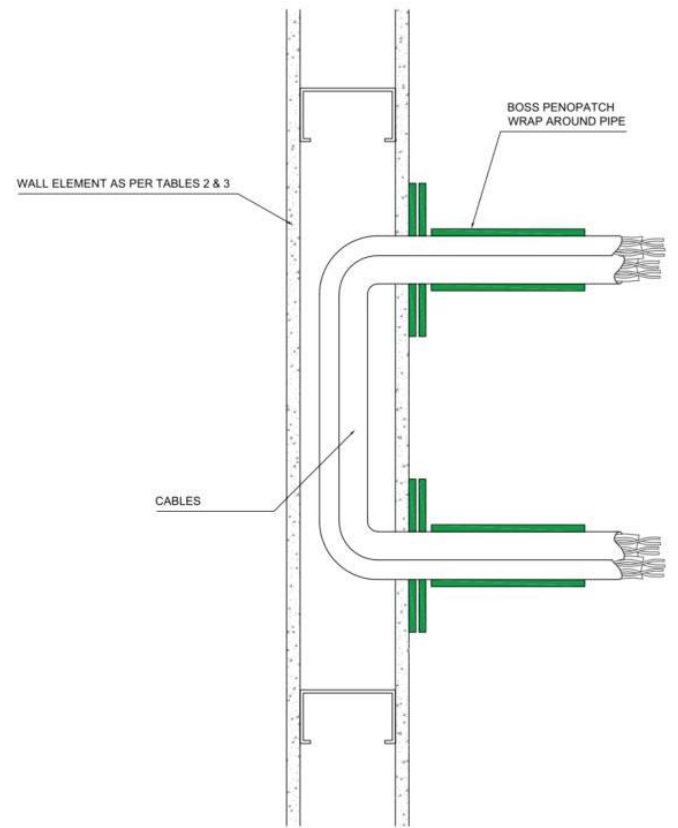


Figure 10 - Cable Penetrations with additional protection penetrating the wall without exiting to the other side



STORAGE & DISPOSAL

Store PenoPatch™ in a cool dry, well-ventilated area. Store in original packaging between 5°C and 25°C. Storage outside these parameters may reduce shelf life and invalidate product warranties.

HEALTH AND SAFETY

To learn more about the safe handling of BOSS PenoPatch™, see the Safety Data Sheet available at bossfire.com

IS THIS PUBLICATION CURRENT?

This document may be superseded by new versions. If you are unsure of whether this document is a current publication, please call us on +61 2 9531 8591 to confirm.

LIMITATION

BOSS Passive Fire Pty Ltd has provided the above technical information in good faith and to the best of its knowledge. This information was deemed to be correct at the time of publication. Should any data come to BOSS Passive Fire's attention relating to the fire resistance or performance of the product described BOSS Passive Fire reserve the right to amend this report.

BOSS Passive Fire strive to constantly improve and develop products so this information may change without notice.

The information contained herein has been developed as a guide only and it does not constitute a guarantee of compliance of all applications. Each project and/or application may have specific requirements and you should investigate these carefully. Ensure that you have read and understood the appropriate certification relative to your needs, and ensure you seek acceptance from the Certifying Authority or compliance inspector before installation. For updates on the range of BOSS Fire® certification please contact BOSS Technical Services on +61 2 9531 8591.

FURTHER INFORMATION

For additional technical information on the performance of BOSS PenoPatch™, other BOSS Fire® products or any other BOSS Fire® related information please contact us on:

AU:

1300 502 677
Bossfire.com.au

NZ:

0800 502 677
Bossfire.co.nz

Admin:

+612 9531 8591
info@bossfire.com.au
Unit 1, 16 Atkinson Rd Taren Point NSW 2229 AUSTRALIA