

# FyreBox™ Cast-In



## Pre-Planned

Eliminate risk & “Cast In” your passive fire protection.



## Time Saving

Avoids messy concrete core drilling.



## Versatile

Mixed pipe & cables bundles through one opening.

## BOSS FyreBox™ Cast-In

The new **BOSS FyreBox™ Cast-In** is a multi-service cable and pipe transit device designed for firestopping bundled services through fire-rated concrete floor slabs. Engineered specifically for new construction, it is installed before the concrete pour, saving time, space, and eliminating the need for messy, costly concrete coring. By pre-planning the passive fire protection, the design eliminates compliance risks in shaft and riser applications.



### Why cast into the slab?

- Pre-planning avoids compliance risks
- Saves time in construction
- Improved scheduling of trades
- Saves space by allowing mixed services to pass through one opening
- Avoids costly concrete core hole drilling

### Key Features

- Specifically engineered to allow for all slab thicknesses with “off the shelf” extension sleeve.
- Unique brush system provides:
- Fast & easy installation of services
- Space to allow building movement in seismic areas
- Future proofing benefits to add services later
- FRL's up to 4hrs (-/240/240)
- Approved to AS1530.4-2014 & AS4072.1-2005
- Tallest Opening Size of any transit device on the market



## How does the System Work?

- The **FyreBox™ Cast-In** Features advanced, high-pressure intumescent material around the internal perimeter of the metal chassis.
- Intumescent expands during a fire to seal voids around metallics & closes gaps left by melting combustibles.
- Forms a dense char for a high-performance fire seal.
- Includes the innovative **BOSS Fire® BrushSeal™** for easier installation and compliance.
- Delivers industry-leading fire protection standards of up to 4hrs.



Above: Photo taken post fire test, highlighting the expansion of internal intumescent.

## Who will benefit from use of the system?



**Architects** - Allows for simple design and coordination and space saving.



### Fire Protection & Maintenance Contractors

Simple system identification and easy AS1851 maintenance inspections. Unique brush system allows for future proofing the building.



**Builders** - Ease of trades scheduling, removes compliance risks and controls costs.

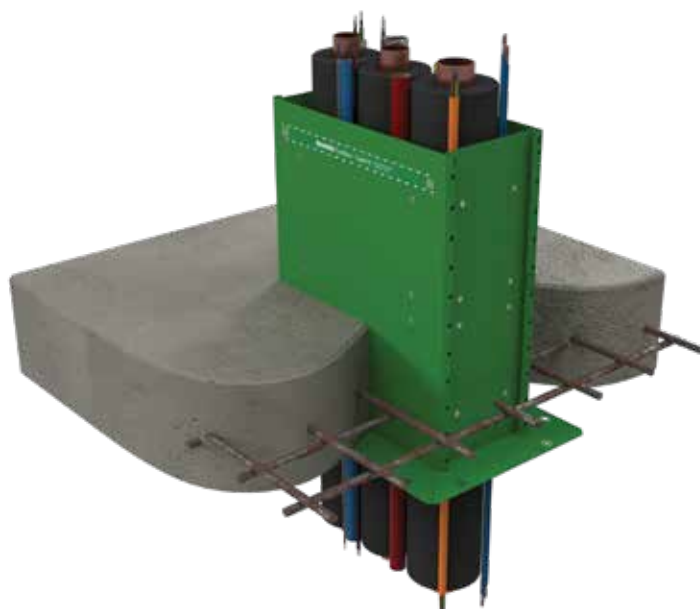


**Plumbing, Electrical and HVAC Trades** - Reduces installation costs and saves labour, and removes costly defects.



### Building Certifiers / Building Surveyors

Versatile and simple installation method results in reduced compliance defects.



## Mixed service bundles in one opening. Unlimited quantities. Unlimited combinations.

- Orange Circular Mains & TPS Power Cables
- Aluminium Cables
- Data, Comms & Fibre Optic Cables
- uPVC Pipes & Conduits
- Steel & cPVC Sprinkler Pipes
- Insulated Copper Pipes & A/C Paircoil
- Steel, Stainless Steel, Ferrous Metal & Copper Pipes (Lagged & Unlagged)
- HDPE, PP, PP-R, PE-RT & Kelox Plastic Pipes

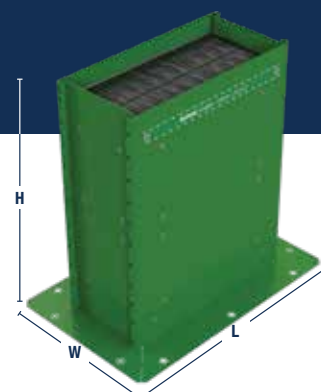
## Product Specifications

### BOSS FyreBox™ Cast-In

BOSS has developed a wide range of standard sizes off the shelf to avoid custom fabrication & costly lead times. Stocked sizes include:



Internal Dimensions



External Dimensions

Product ID	Description	Internal Dimensions (mm)	External Dimensions (mm)
BFBCI-300	BOSS FyreBox™ Cast-In 300mm	300 (L) x 150 (W) x 400 (H)	420 (L) x 270 (W) x 400 (H)
BFBCI-450	BOSS FyreBox™ Cast-In 450mm	450 (L) x 150 (W) x 400 (H)	570 (L) x 270 (W) x 400 (H)
BFBCI-600	BOSS FyreBox™ Cast-In 600mm	600 (L) x 150 (W) x 400 (H)	720 (L) x 270 (W) x 400 (H)
BFBCI-750	BOSS FyreBox™ Cast-In 750mm	750 (L) x 150 (W) x 400 (H)	870 (L) x 270 (W) x 400 (H)
BFBCI-900	BOSS FyreBox™ Cast-In 900mm	900 (L) x 150 (W) x 400 (H)	1020 (L) x 270 (W) x 400 (H)

### BOSS FyreBox™ Cast-In Extension Sleeve

BOSS have specifically engineered an “Extension Sleeve” that is simply slipped into place to extend the height of the **FyreBox™ Cast-In** in 200mm high increments to adapt to any concrete floor slab thickness.



Product ID	Description	Additional Height
BFBCI-300-EX200	FyreBox™ Cast-In 200mm Extension Sleeve – To Suit BFBCI-300	200mm
BFBCI-450-EX200	FyreBox™ Cast-In 200mm Extension Sleeve – To Suit BFBCI-450	200mm
BFBCI-600-EX200	FyreBox™ Cast-In 200mm Extension Sleeve – To Suit BFBCI-600	200mm
BFBCI-750-EX200	FyreBox™ Cast-In 200mm Extension Sleeve – To Suit BFBCI-750	200mm
BFBCI-900-EX200	FyreBox™ Cast-In 200mm Extension Sleeve – To Suit BFBCI-900	200mm

It's **BOSS**. It's **BETTER**.

## Contact us

We manufacture our products to the highest quality standards, and we appreciate your supporting an Australian Owned company. If you have any questions please contact us.

**AU: 1300 502 677**  
**NZ: 0800 502 677**  
**www.bossfire.com**

